



India Meteorological Department
(Ministry of Earth Sciences)

NATIONAL BULLETIN NO. 7 (Land/03/2025)

TIME OF ISSUE: 1245 HOURS IST

DATED: 18.07.2025

FROM: INDIA METEOROLOGICAL DEPARTMENT (FAX NO. 24643965/24699216/24623220)

TO: CONTROL ROOM, NDM, MINISTRY OF HOME AFFAIRS ([FAX.NO. 23093750](#))

CONTROL ROOM NDMA ([FAX.NO. 26701729](#))

CABINET SECRETARIAT (FAX.NO.23012284, 23018638)

PS TO HON'BLE MINISTER FOR S & T AND EARTH SCIENCES (FAX NO.23316745)

SECRETARY, MOES (FAX NO. 24629777)

H.Q. (INTEGRATED DEFENCE STAFF AND CDS) (FAX NO. 23005137/23005147)

DIRECTOR GENERAL, DOORDARSHAN (23385843)

DIRECTOR GENERAL, AIR (23421105, 23421219)

PIB MOES (FAX NO. 23389042)

UNI (FAX NO. 23355841)

D.G. NATIONAL DISASTER RESPONSE FORCE (NDRF) (FAX NO. 26105912, 2436 3260)

DIRECTOR, PUNCTUALITY, INDIAN RAILWAYS (FAX NO. 23388503)

CHIEF SECRETARY, GOVT. OF UTTAR PRADESH (FAX NO. 0522-2239283)

CHIEF SECRETARY, GOVT. OF MADHYA PRADESH (FAX NO. 0755-2551521)

CHIEF SECRETARY, GOVT. OF RAJASTHAN (FAX NO. 0141-2227114)

CHIEF SECRETARY, GOVT. OF DELHI (FAX NO. 011-23392101)

CHIEF SECRETARY, GOVT. OF CHANDIGARH (FAX NO. 0172-2740608)

CHIEF SECRETARY, GOVT. OF GUJARAT (FAX NO. 079-23250305)

CHIEF SECRETARY, GOVT. OF HARYANA (FAX NO.0172-2740317)

Subject: Depression over northwest Madhya Pradesh & adjoining Southwest Uttar Pradesh

The Depression over northwest Madhya Pradesh & adjoining Southwest Uttar Pradesh moved west-northwestwards with a speed of 17 kmph during past 6 hours and lay centred at 0830 hrs IST of today, the 18th July, 2025, over the same region, near latitude 26.5°N and longitude 78.6°E, 20 km southeast of Bhind, 50 km northeast of Gwalior, 80 km east-southeast of Dholpur and 100 km southeast of Agra.

It is likely to move west-northwestwards across northwest Madhya Pradesh and east Rajasthan and weaken gradually into a well marked low pressure area during next 24 hours.

Warnings:

(i) Rainfall Warning:

West Uttar Pradesh: Light to moderate rainfall at most places with **heavy to very heavy rainfall** at isolated places is very likely on 18th July.

East Madhya Pradesh: Light to moderate rainfall at most places with **heavy to very heavy rainfall** at isolated places is very likely on 18th July.

West Madhya Pradesh: Light to moderate rainfall at most places with heavy to **very heavy rainfall** at a few places and **extremely heavy rainfall** at isolated places on 18th July and **heavy rainfall** at isolated places on 19th July.

East Rajasthan: Light to moderate rainfall at most places with heavy to **very heavy rainfall** at a few places on 18th & 19th July and **extremely heavy rainfall** at isolated places on 18th July.

West Rajasthan: Light to moderate rainfall at most places with heavy to **very heavy rainfall** at a few places and **extremely heavy rainfall** at isolated places on 18th July; **heavy to very heavy rainfall** at isolated places on 19th July and heavy rainfall at isolated places on 20th July.

Gujarat: Light to moderate rainfall at most places with **heavy rainfall** at isolated places over north Gujarat on 18th July.

(ii) Wind Warnings: Squally wind speed reaching 40-50 kmph gusting to 60 kmph north Madhya Pradesh and adjoining west Uttar Pradesh & east Rajasthan and 30-40 kmph gusting to 50 kmph over adjoining areas of South Haryana is likely to prevail during next 12 hours and decrease gradually thereafter.

(iii) Impact Expected and Action Suggested due to very heavy/extremely heavy rainfall and squally winds (Uttar Pradesh, Madhya Pradesh, Rajasthan, Gujarat and Haryana)

Impact expected:

- ❖ Breaking of tree branches, uprooting of small trees like banana, papaya, drum sticks. Strong wind and rain may damage plantation, horticulture and standing crops.
- ❖ Partial damage to vulnerable structures due to strong winds and rain.
- ❖ Minor damage to kutcha houses/walls, huts and roads due to heavy rain.
- ❖ Loose objects may fly.
- ❖ Onshore and offshore operations may get affected.
- ❖ Small ships, trawlers and boats may be affected.
- ❖ Road and rail traffic may be affected due to heavy rain and squally winds.
- ❖ There could be localised landslides, mudslides, landslips, water logging, inundation and flooding over low lying areas.
- ❖ Occasional reduction in visibility due to heavy rainfall.
- ❖ Helicopter services may get affected.

Action suggested:

- ❖ People are advised to keep a watch on the weather for worsening conditions and be ready to move to safer places accordingly.
- ❖ Take safe shelters; do not take shelter under trees, as there could be lightning.
- ❖ In case of expected lightning, unplug electrical/ electronic appliances, immediately, get out of water bodies and keep away from all the objects that conduct electricity.
- ❖ Tourism and recreational activities to be regulated.
- ❖ Onshore and offshore activities to be judiciously regulated.
- ❖ Helicopter services to be regulated.

Significant rainfalls accumulated in past 24 hrs recorded at 0830 hrs IST of today, the 18th July, 2025 are given in Annexure-I

Next bulletin will be issued at 1430 hrs IST of today, the 18th July, 2025.

(Ananda Kumar Das)

Scientist-F, IMD, New Delhi

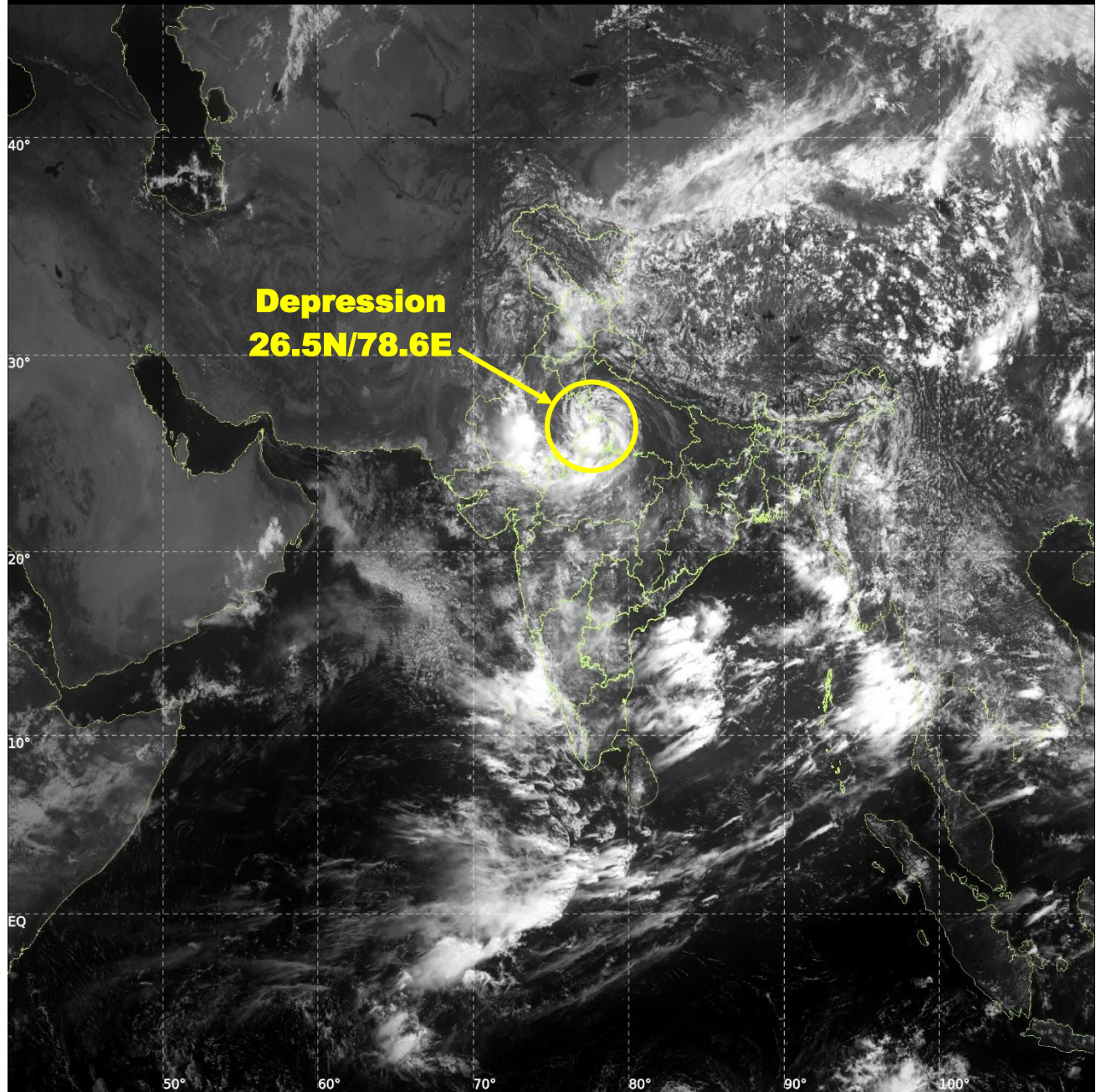
Copy to: Meteorological Centres- Lucknow, Bhopal, Jaipur, Delhi, Chandigarh, Ahmedabad.



INSAT-3DS IMG, Visible Count @ 0.65 μm
GMT:18-07-2025/(0530-0557) IST:18-07-2025/(1100-1127)
L1C MERCATOR (LINEAR STRETCH: 0.5%)

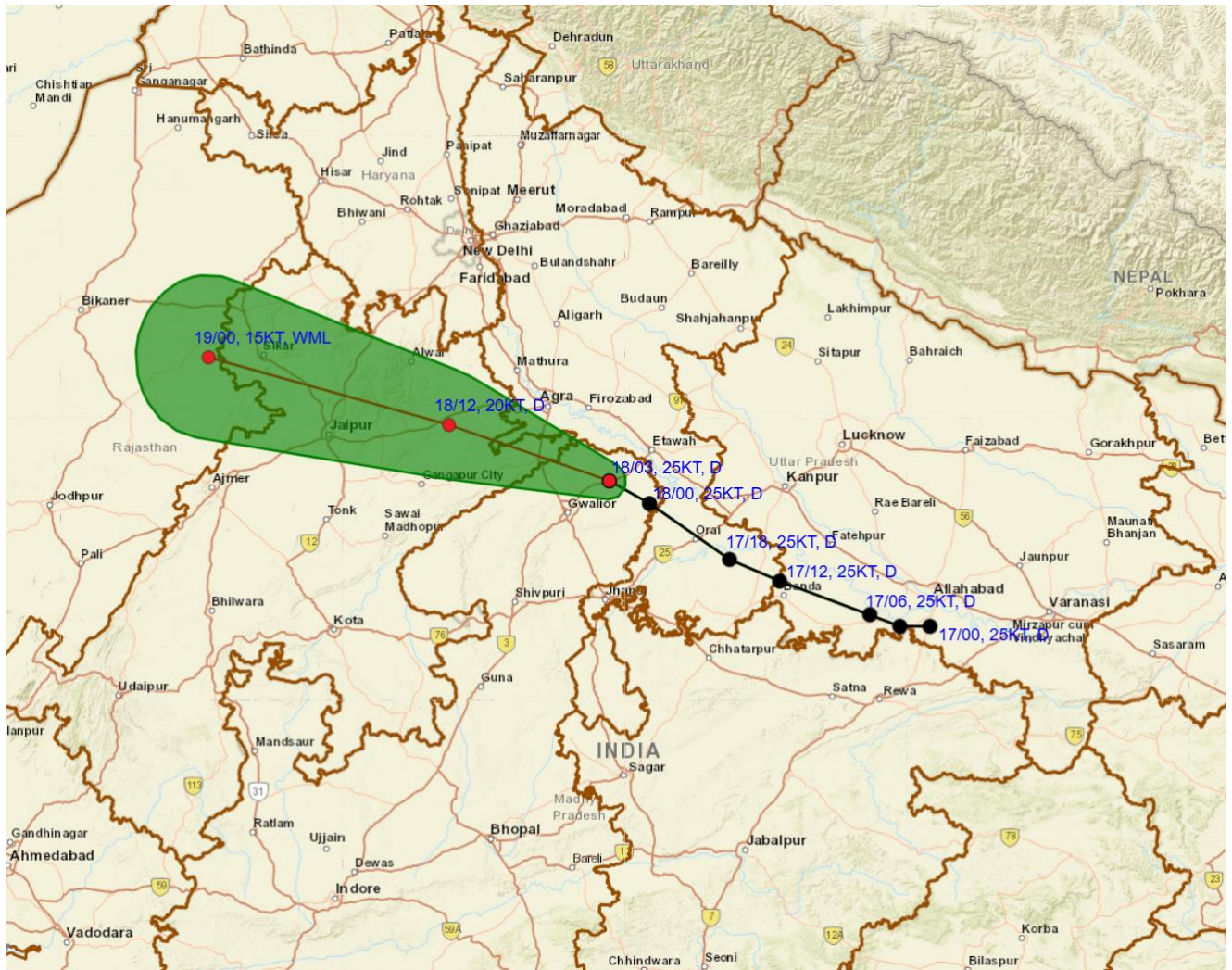
66

448





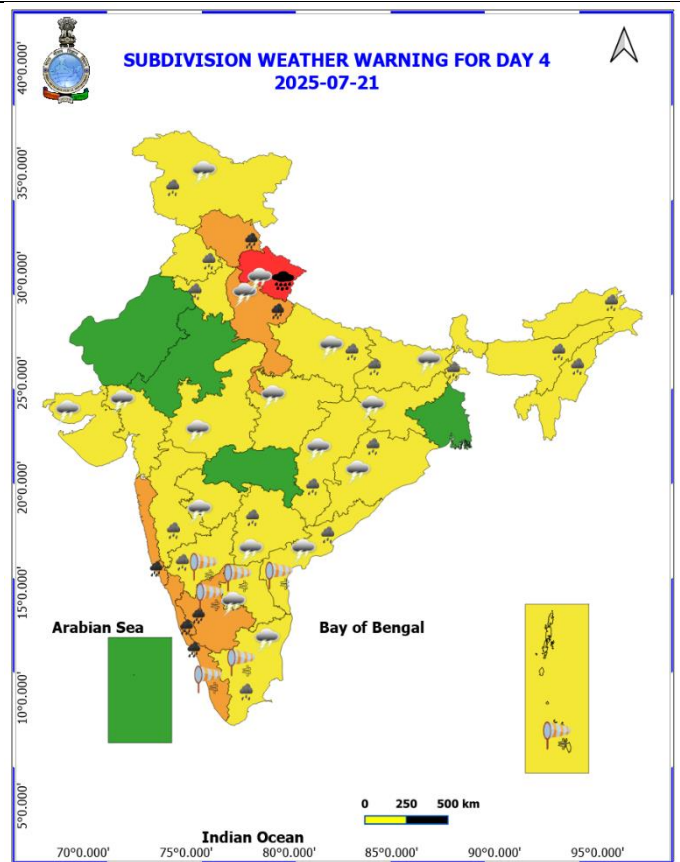
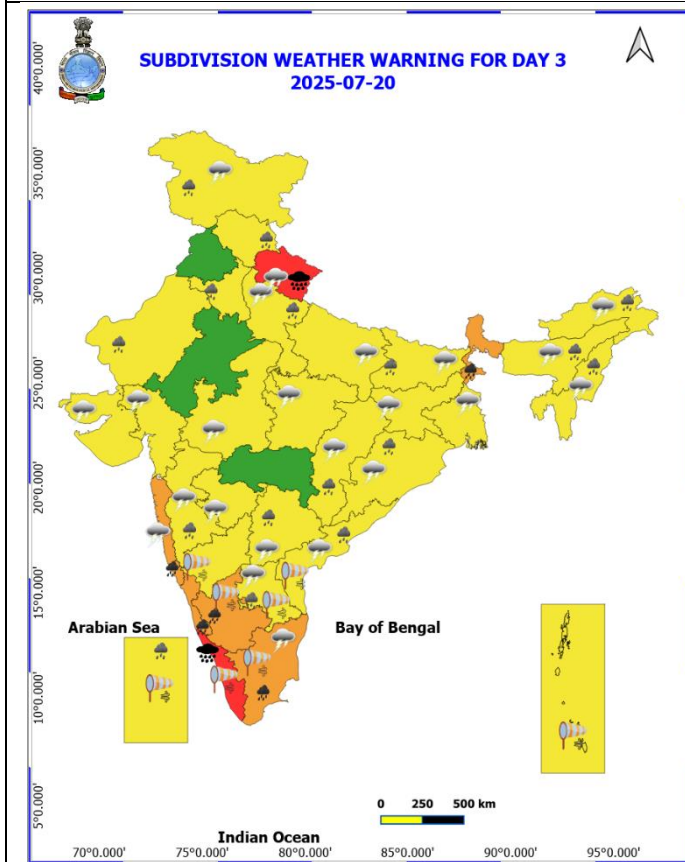
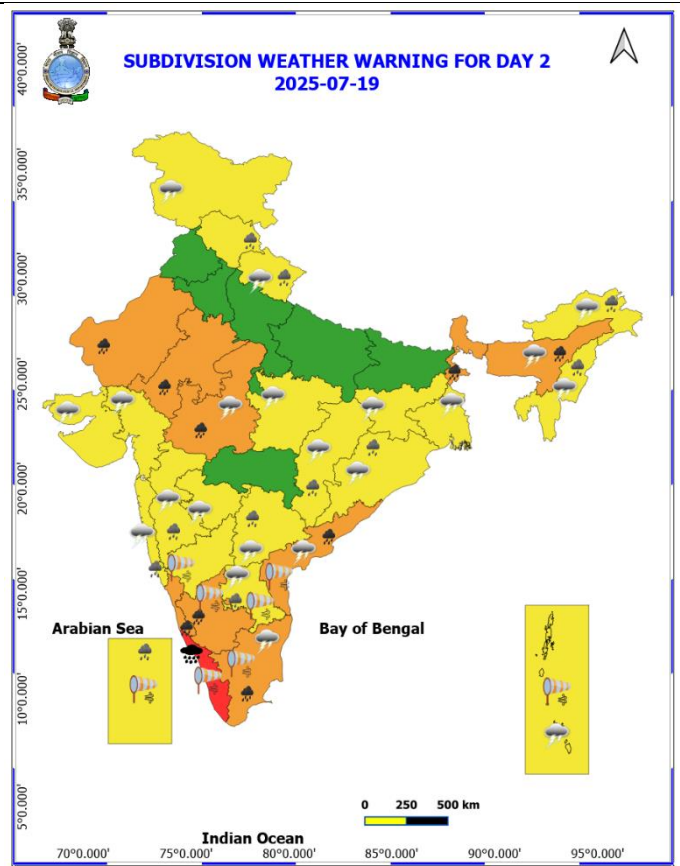
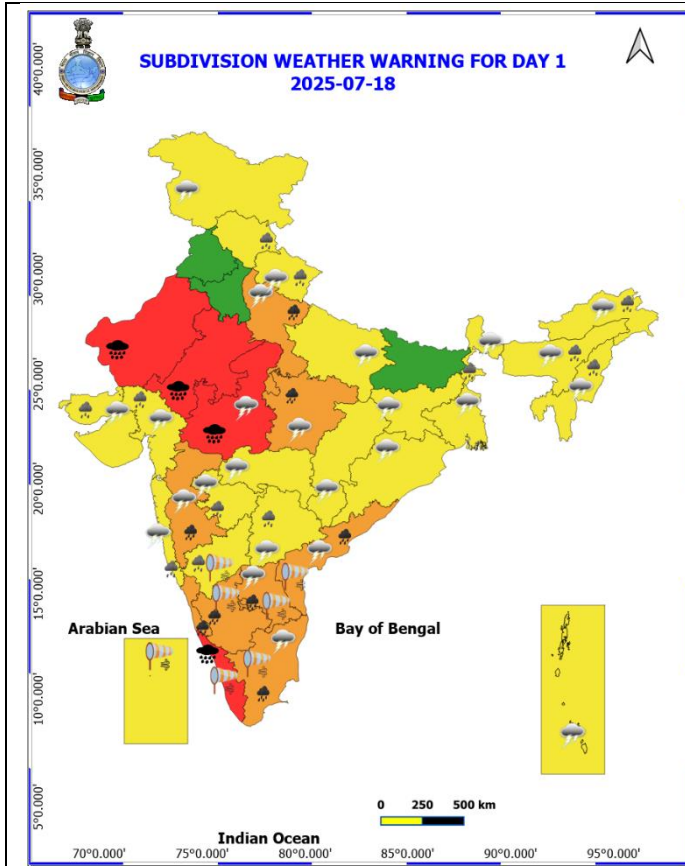
**OBSERVED AND FORECAST TRACK ALONG WITH CONE OF UNCERTAINTY OF
LAND DEPRESSION OVER NORTHWEST MADHYA PRADESH AND ADJOINING
SOUTHWEST UTTAR PRADESH AT 0830 HRS. IST (0300 UTC) OF 18th JULY 2025**

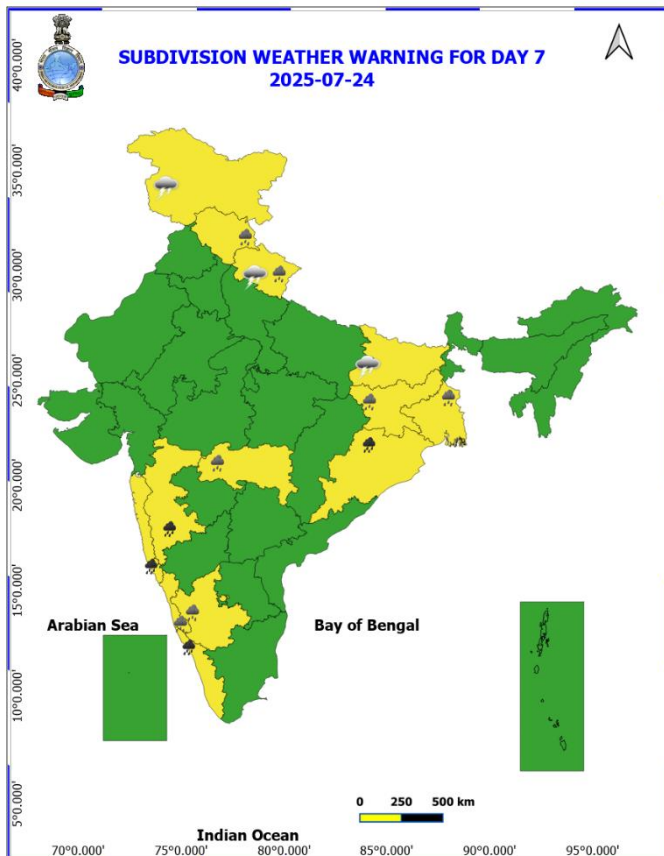
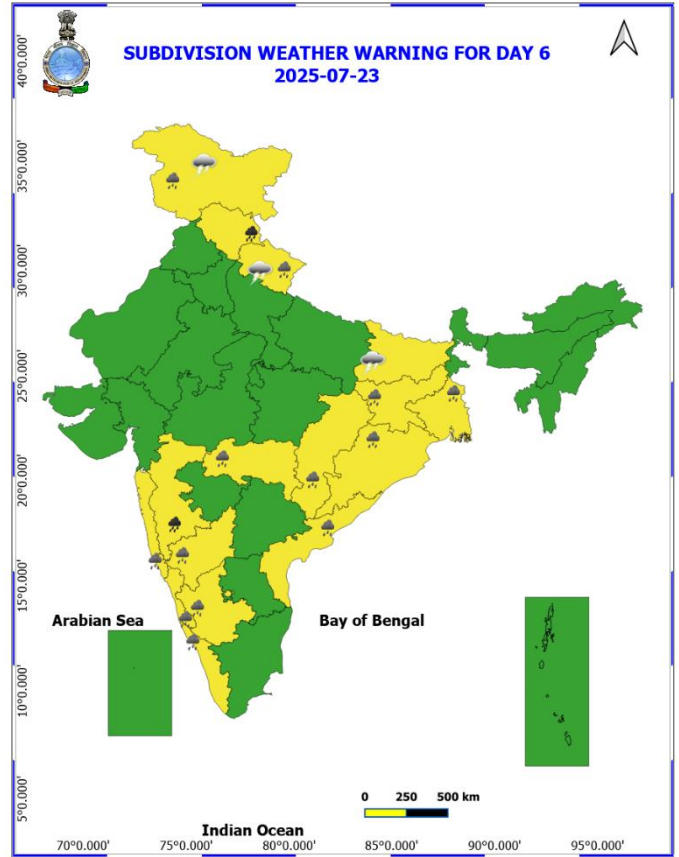
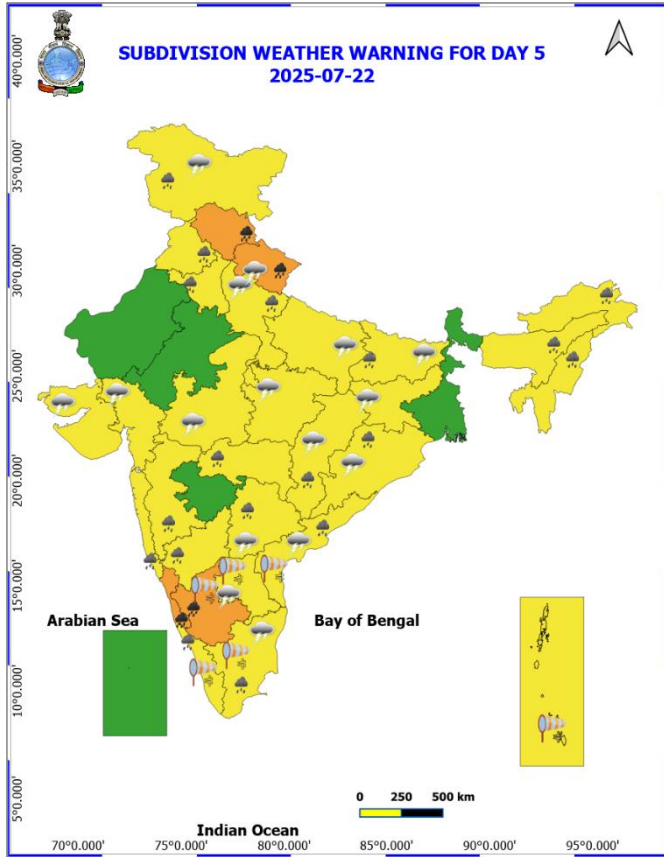


DATE/TIME IN UTC
IST=UTC + 0530
L: LOW PRESSURE AREA
WML: WELL MARKED LOW PRESSURE AREA
D: DEPRESSION (17-27 KT)
DD: DEEP DEPRESSION (28-33 KT)
CS: CYCLONIC STORM (34-47 KT)
SCS: SEVERE CYCLONIC STORM (48-63KT)
VSCS: VERY SEVERE CYCLONIC STORM (64-89 KT)
ESCS: EXTREMELY SEVERE CYCLONIC STORM (90-119 KT)
SuCS: SUPER CYCLONIC STORM (≥ 120 KT)

● LESS THAN 34 KT
○ 34-47 KT
○ ≥ 48 KT
— OBSERVED TRACK
— FORECAST TRACK
▲ CONE OF UNCERTAINTY

Weather Warning Graphics





Fog	Heavy Snow	Cold Wave	COLOUR CODED WARNING <div style="background-color: #90EE90; padding: 2px; margin-bottom: 2px;">No Warning (No Action)</div> <div style="background-color: #FFFF00; padding: 2px; margin-bottom: 2px;">Watch (Be Aware)</div> <div style="background-color: #FFA500; padding: 2px; margin-bottom: 2px;">Alert (Be Prepared To Take Action)</div> <div style="background-color: #FF0000; padding: 2px;">Warning (Take Action)</div>										
Heavy Rain	Dust Storm	Cold Day											
Very Heavy Rain	Heat Wave	Ground Frost											
Extremely Heavy Rain	Warm Night	Hot Day											
Thunder & Lightning	Hot & Humid	Strong Surface Winds	Probabilistic Forecast <table border="1"> <thead> <tr> <th>Terms</th> <th>Probability of Occurrence (%)</th> </tr> </thead> <tbody> <tr> <td>Unlikely</td> <td>< 25</td> </tr> <tr> <td>Likely</td> <td>25 - 50</td> </tr> <tr> <td>Very Likely</td> <td>50 - 75</td> </tr> <tr> <td>Most Likely</td> <td>> 75</td> </tr> </tbody> </table>	Terms	Probability of Occurrence (%)	Unlikely	< 25	Likely	25 - 50	Very Likely	50 - 75	Most Likely	> 75
Terms	Probability of Occurrence (%)												
Unlikely	< 25												
Likely	25 - 50												
Very Likely	50 - 75												
Most Likely	> 75												
Hailstorm													
Dust Raising Winds													

* Red colour warning does not mean "Red Alert", Red colour warning means "Take Action".
 Forecast and Warning for any day is valid from 0830 hours IST of day till 0830 hours IST of next day.
 For more details, kindly visit <https://mausam.india.gov.in> or contact: 011-2434-4599
 (Service to the Nation since 1875)

Flash Flood Guidance

24 hours Outlook for the Flash Flood Risk (FFR) till 0530 IST of 19-07-2025 :

Moderate flash flood risk likely over few watersheds & neighbourhoods of following Met Sub-divisions during next 24 hours.

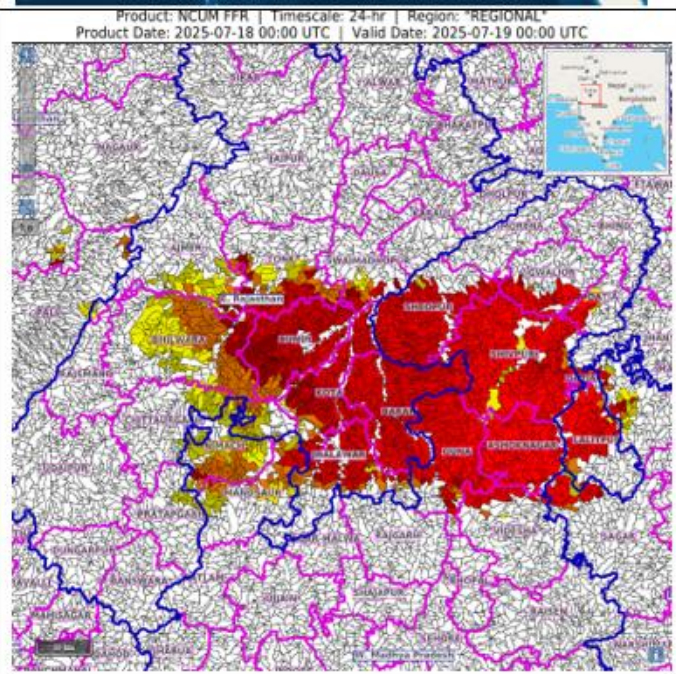
East Rajasthan - Baran, Bundi, Jhalawar, tonk, Bhilwara, Ajmer, Swaimadhopur, Jhalawar, and Kota districts.

West Uttar Pradesh - Hamirpur, Jalaun, Jhansi, Lalitpur and Mahoba districts.

East Madhya Pradesh - Chhatarpur, Katni, Sagar and Tikamgarh districts.

West Madhya Pradesh - Ashoknagar, Datia, Guna, Gwalior, Morena, Rajgarh, Sheopur, Shivpuri, Neemach, Mandsaur and Videsha districts.

Surface runoff/ Inundation may occur at some fully saturated soils & low-lying areas over Area of Concern (AoC) as shown in map due to expected rainfall occurrence in next 24 hours.



Flash Flood Risk

High Risk (Take Action)

Moderate Risk (Be Prepared)

Low Risk (Be Updated)

Annexure -I

Significant rainfall recorded (in cm) from 0830 hours IST of yesterday to 0830 hours IST of today, the 18th July, 2025:

EAST MADHYA PRADESH: Chahtarpur-aws (Chhatarpur) 31, Gaurihar (Chhatarpur) 27, Palera (Tikamgarh) 23, Lavkushnagar (Chhatarpur) 19, Rajnagar (Chhatarpur) 18, Ajaigarh (Panna) 17, Khajuraho Aero (Chhatarpur) 15, Satna (raghurajnagar) (Satna) 14, Sohawal (Satna) 14, Birsingpur (Satna) 14, Nowgong (Chhatarpur) 13, Amarpatan (Satna) 13, Jatara (Tikamgarh) 13, Mohangarh (Tikamgarh) 13, Badamalhera (Chhatarpur) 13, Sirmaur (Rewa) 12, Nagode (Satna) 11, Majhgaon (Satna) 11, Panna-aws (Panna) 11, Khargapur (Tikamgarh) 11, Devendranagar (Panna) 10, Naigarhi (Rewa) 10, Amanganj (Panna) 9, Bijawar (Chhatarpur) 9, Gonour (Panna) 9, Raipurkarchuliyan (Rewa) 9, Rampur Baghelan (Satna) 9, Tikamgarh-aws (Tikamgarh) 9, Mangawan (Rewa) 9, Semariya (Rewa) 7, Baldevgarh (Tikamgarh) 7, Hanumana (Rewa) 7, Pawai (Panna) 7, Bilhari (Katni) 7, Teonthar (Rewa) 7, Badagaon Dhasan (Tikamgarh) 7, Orchha (Niwari) 7,

WEST MADHYA PRADESH: Bhanpura (Mandsaur) 18, Datia-aws (Datia) 13, Indergarh (Datia) 12, Bhandar (Datia) 10, Seodha(seondha) (Datia) 9, Mau (Bhind) 9, Guna-aws (Guna) 7, Khilchipur (Rajgarh) 7

EAST RAJASTHAN: Sangod (Kota) 17, Atru Sr (Baran) 8, Nasirabad (Ajmer) 8, Ajmer (Ajmer) 8, Mandana Sr (Kota) 8, Mangrol (Baran) 8, Ajmer Tehsil Sr (Ajmer) 7,

WEST RAJASTHAN: Pilibanga Sr (Hanumangarh) 11, Bhadra (Hanumangarh) 7, Degana (Nagaur) 7,

EAST UTTAR PRADESH: Chilaghat (Banda)-21, Attarra (Banda)-20, Banda (Banda) 15,

WEST UTTAR PRADESH: Kulpahar (Mahoba) 17, Hamirpur Obsy (Hamirpur) 10, Talbehat (Lalitpur) 8,